

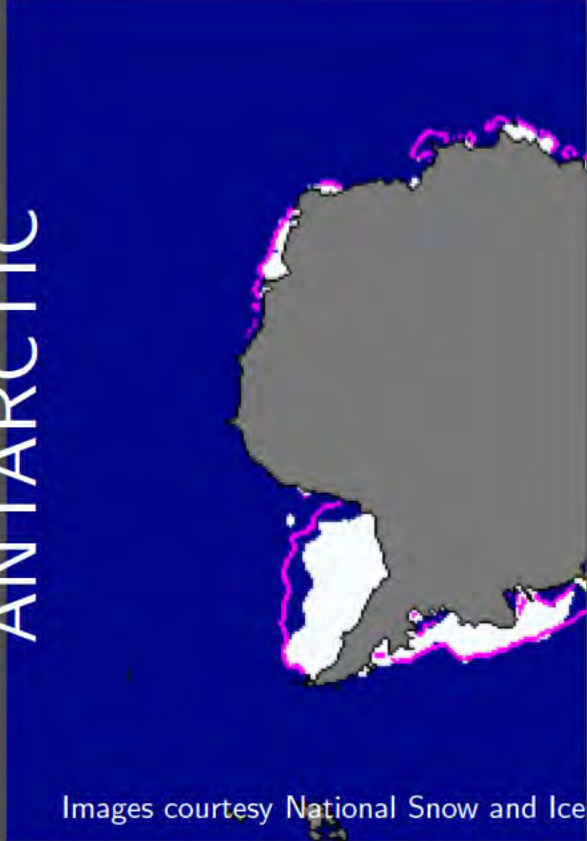
SEA ICE

The Ocean's Fragile Cloak

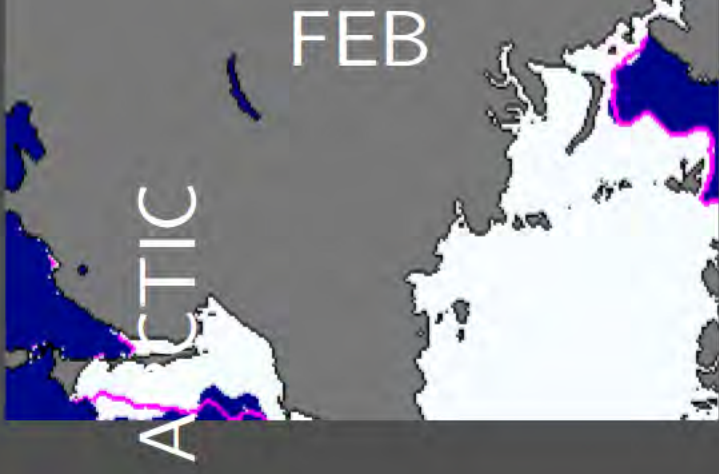


Elizabeth Hunke

ANTARCTIC



Images courtesy National Snow and Ice Center

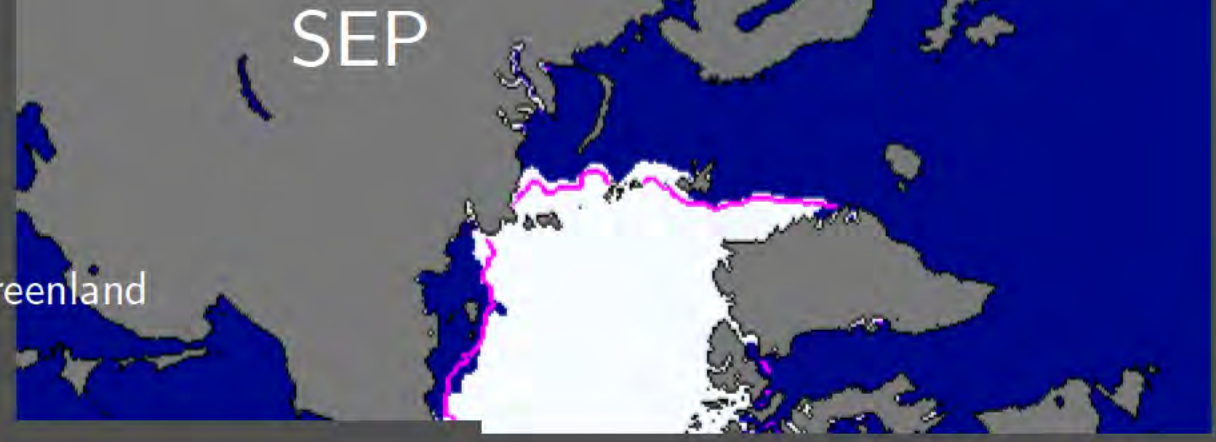
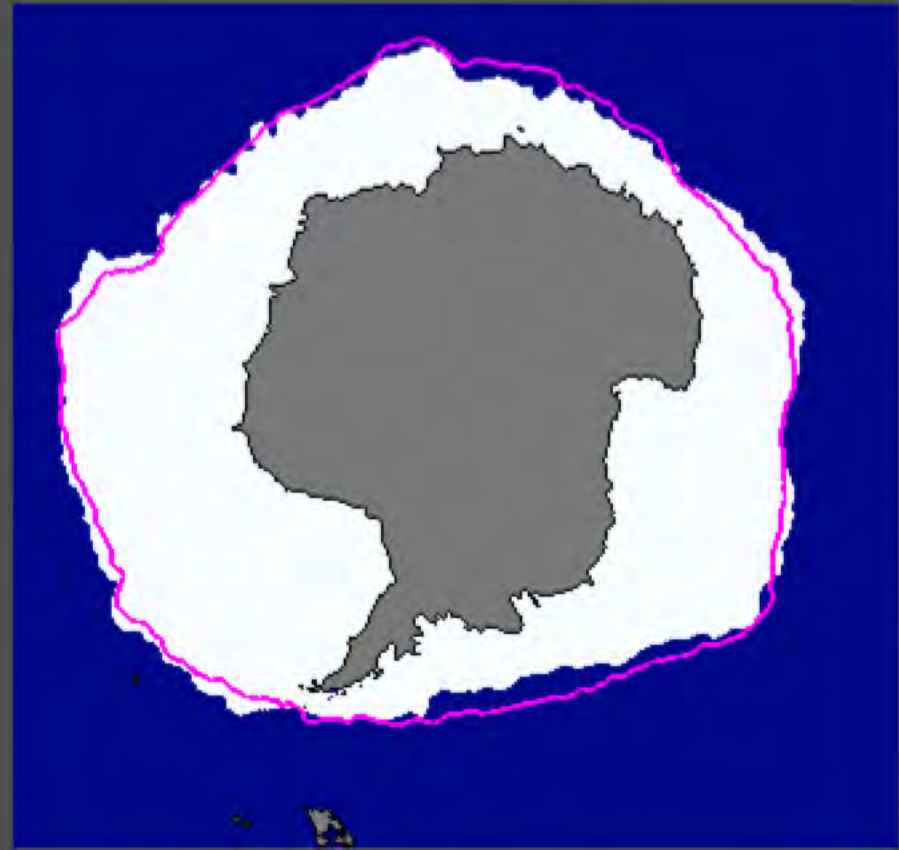


ARCTIC

FEB

Alaska

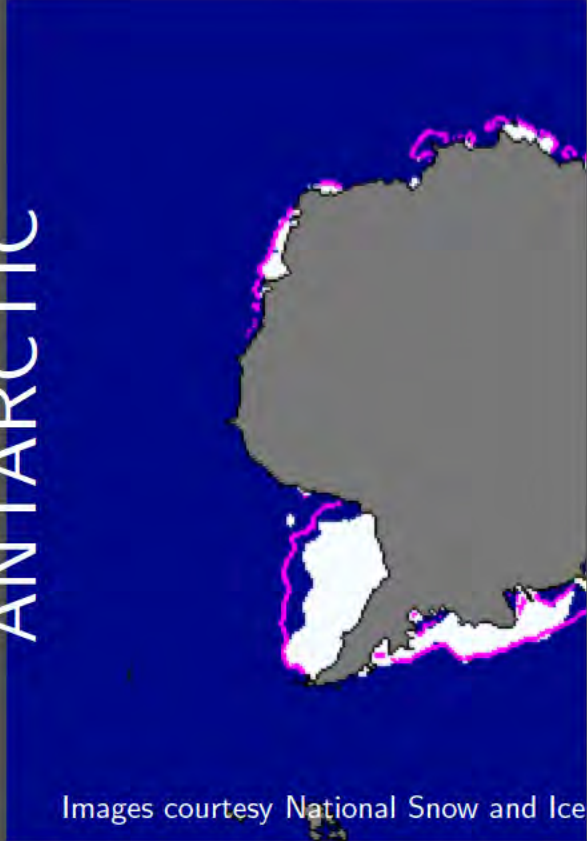
Greenland



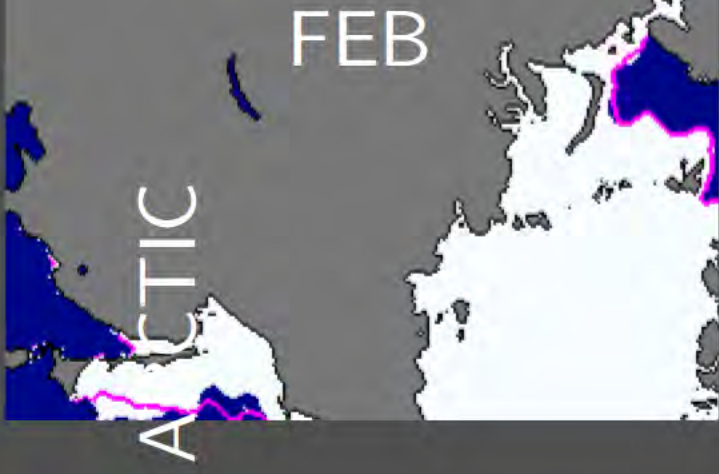
SEP

median
ice edge

ANTARCTIC



Images courtesy National Snow and Ice Center



ARCTIC

FEB

Alaska

Greenland



SEP

median
ice edge

Total extent = 18.6 million sq km

Total extent = 7.5 million sq km

ARCTIC (September)

2004

2005

2006

2007

Greenland

Alaska

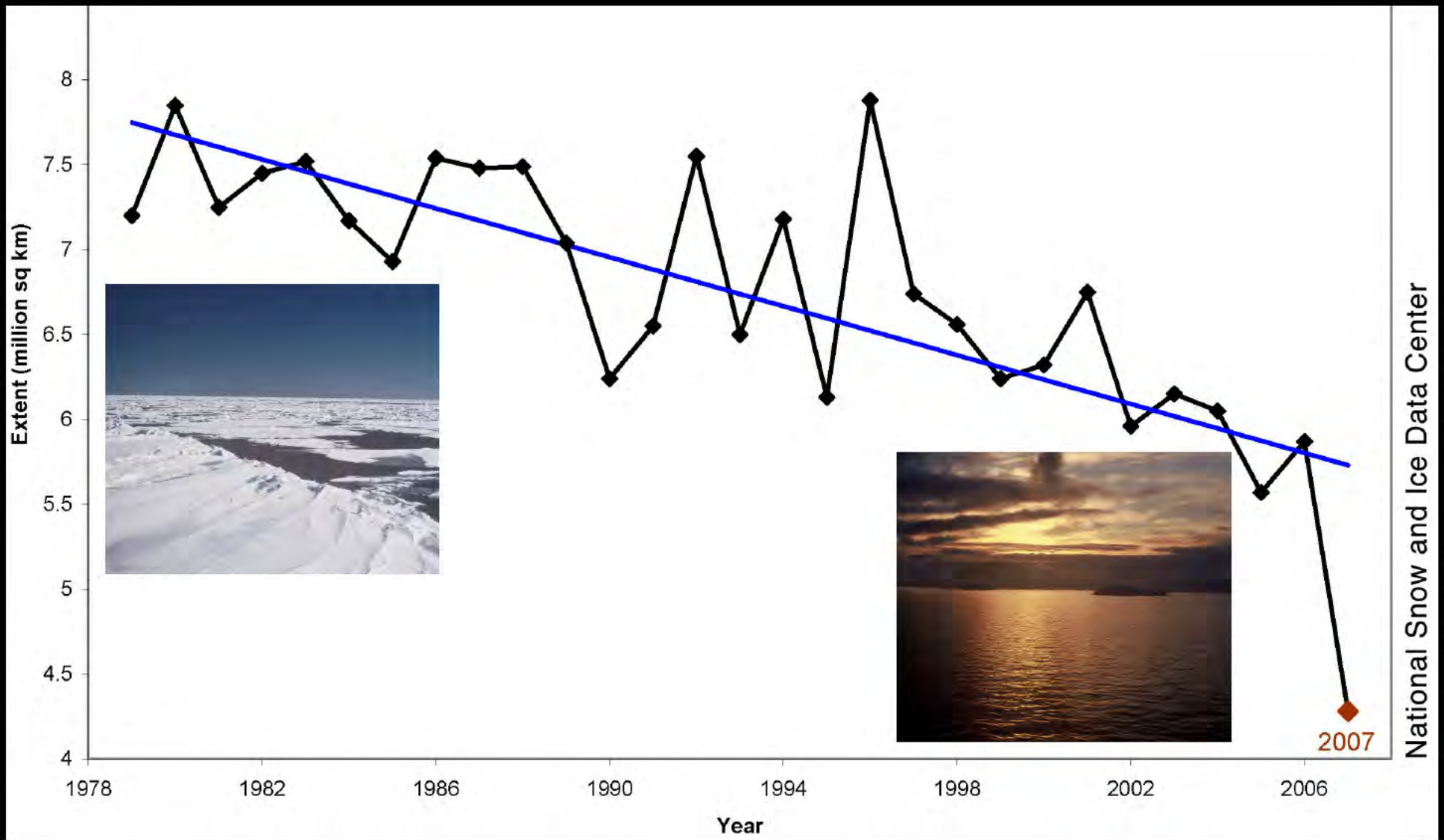
median
ice edge

Total extent = 5.6 million sq km

Sea Ice Extent
Sep 2006

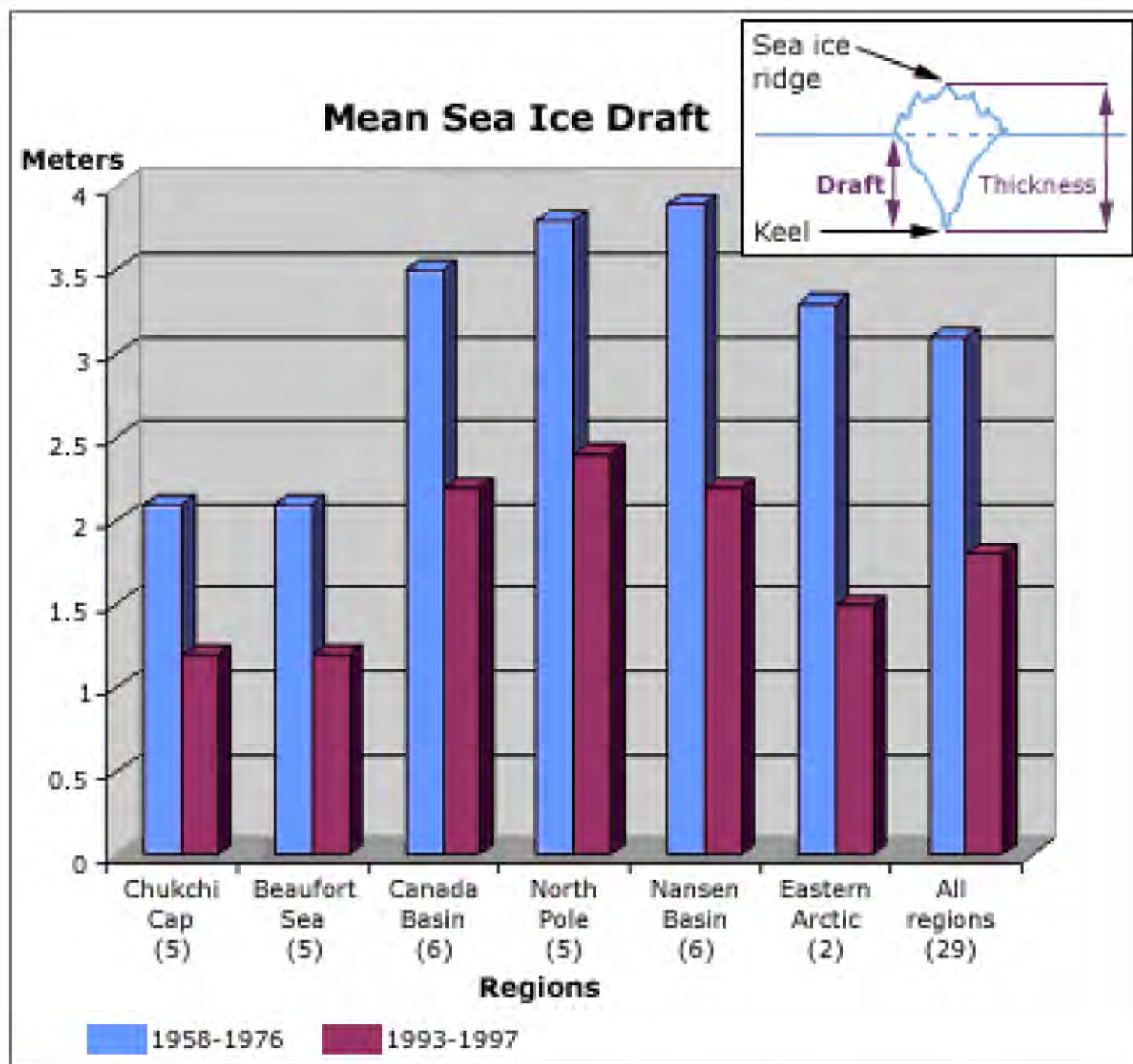
Sea Ice Extent
Sep 2007

Images courtesy National Snow and Ice Data Center

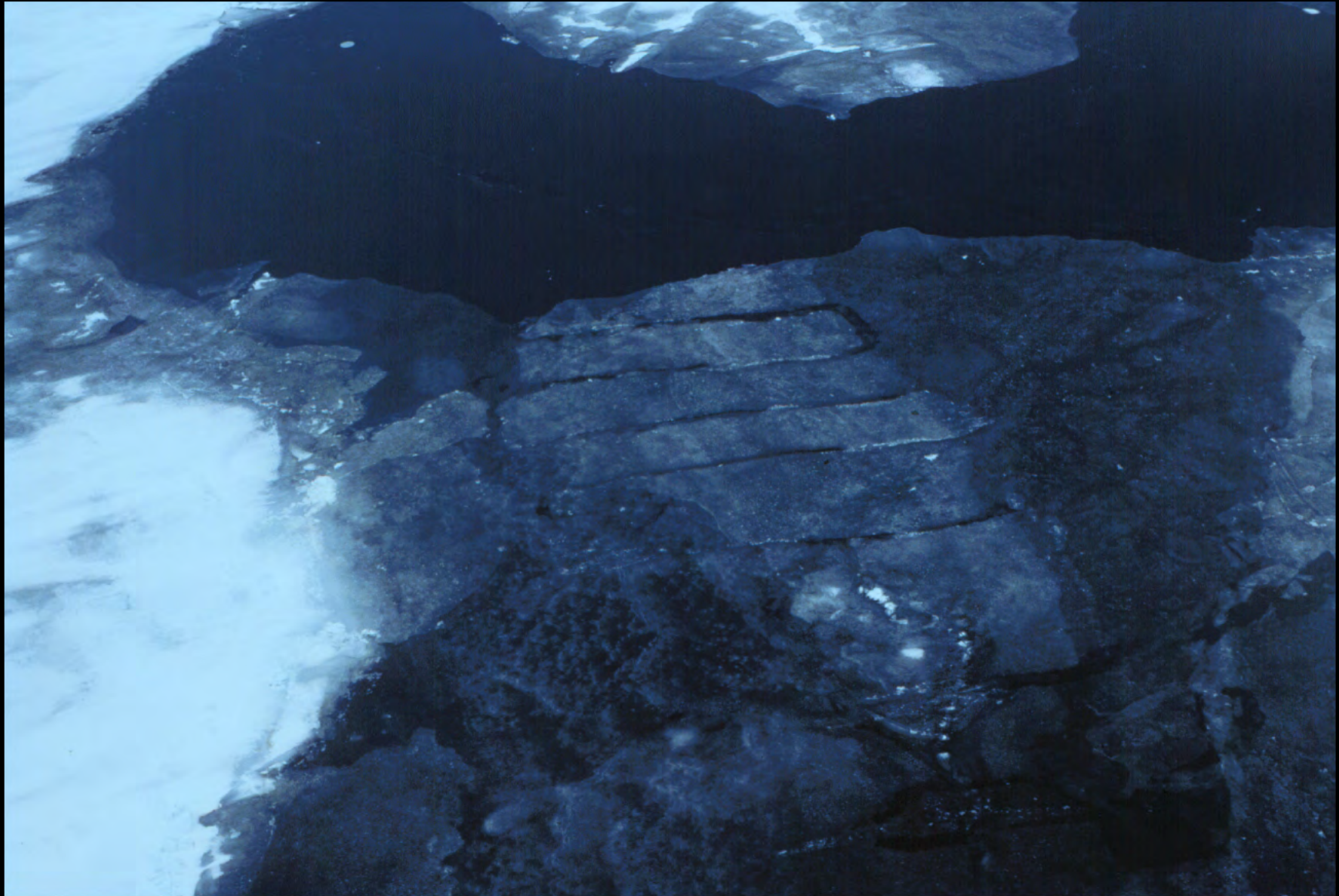


National Snow and Ice Data Center

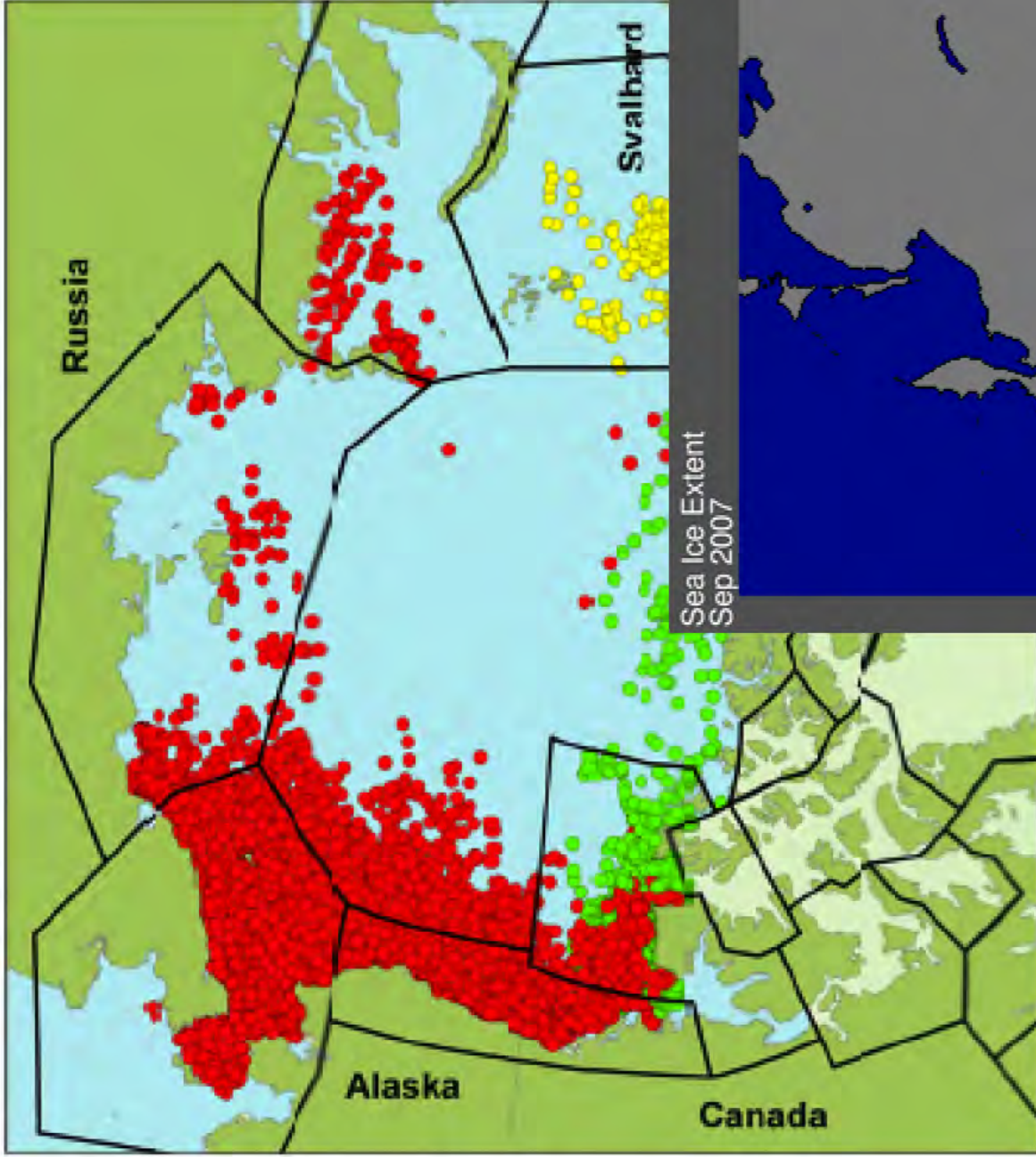
September Arctic sea ice extent

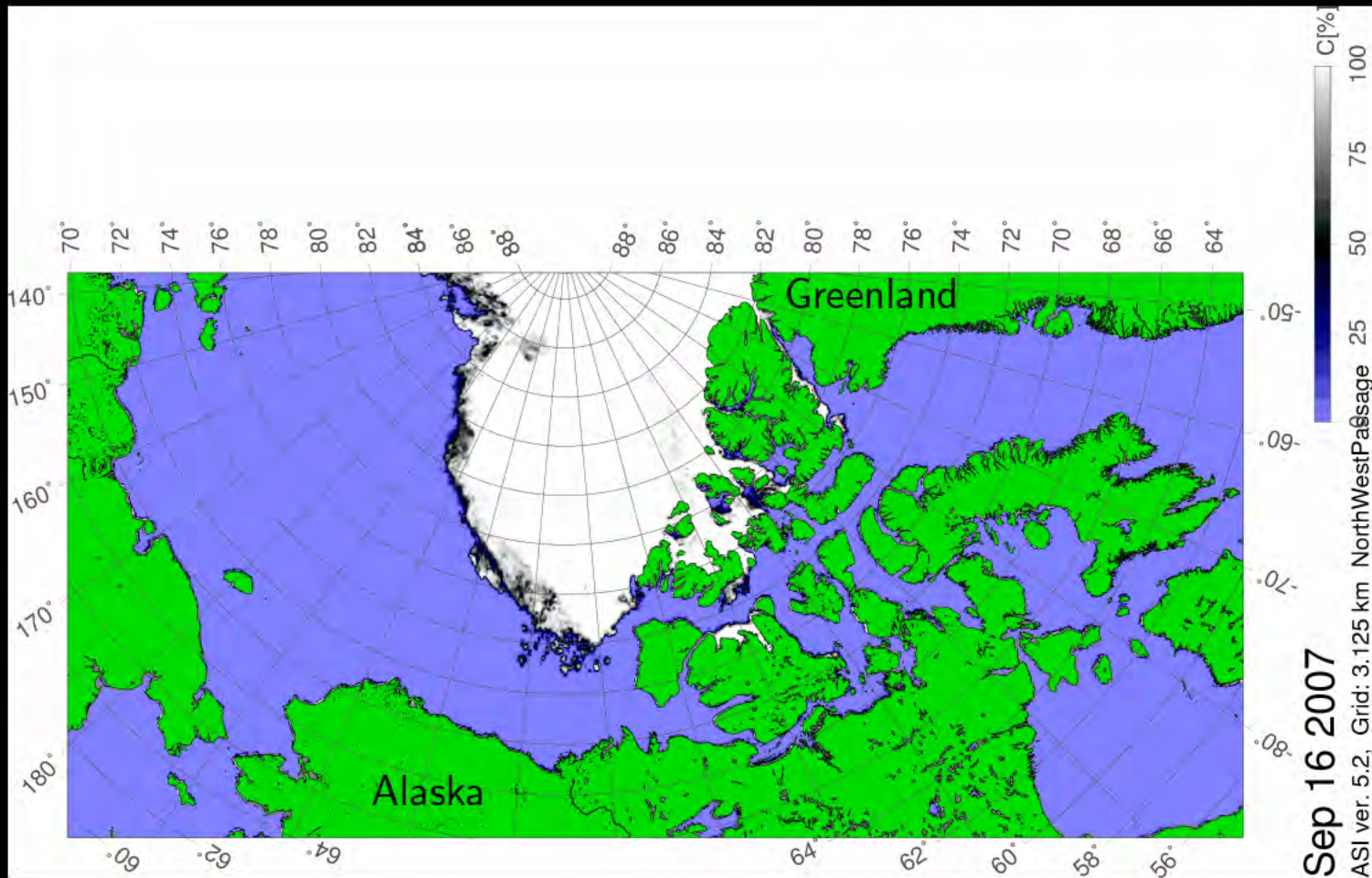


Decrease in Arctic Sea Ice Draft for 1958 to 1997.
 Graph derived from [Rothrock et al. 1999](#).




thin ice...





The Northwest Passage opened
for the first time in human memory...



Sea ice
influences
ocean circulation too...